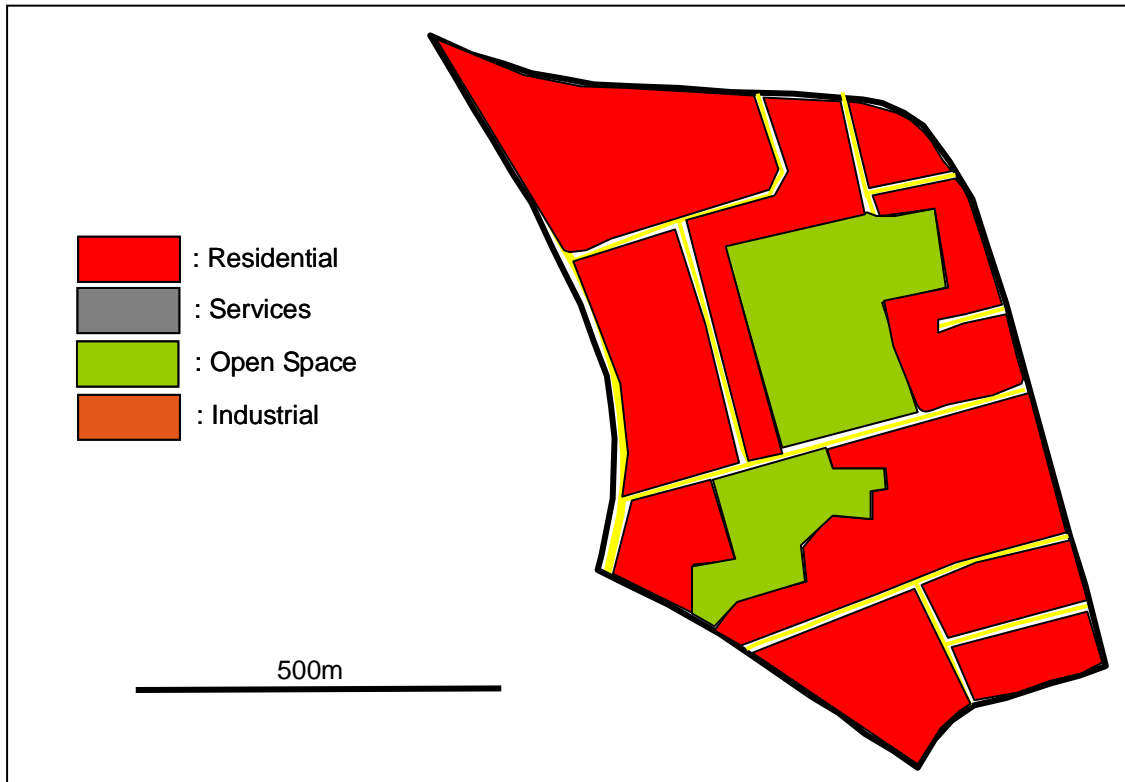


## A Simplified Land Use Map for the Hilton Area of Aberdeen



The pupils in the S4 Standard Grade class undertook fieldwork in the Hilton area. They mapped land use, drew field sketches of the houses and carried out environmental surveys.

The area comprises mixed age housing of a variety of types from modern flats and houses to traditional granite-built villas and tenements. The dwellings are a mixture of council owned and privately owned properties.

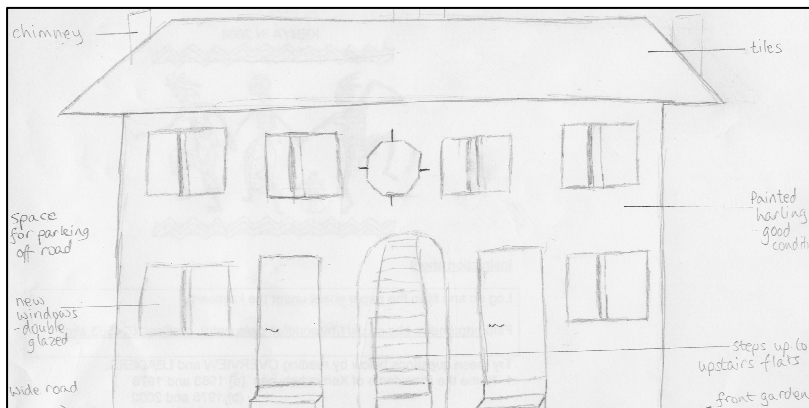
The land use mapping showed that it was a largely residential area, with large planned areas of open space. No industry was identified in the area, and shops and services were only seen on the edge of the fieldwork zone.

The roads were wide and had little through traffic, although at the rush hour the roads are used for driving to and from the CBD, the area is bounded to the West by Anderson Drive which is a major route, a ring road for Aberdeen.

## Low Rise Flats in Hilton



Low rise tenements with private gardens and public open space, wide roads with on street parking. Some housing built around quiet crescents and cul de sacs.



## Newer High Rise Flats with Semidetached and Terraced Housing Close To North Anderson Drive



## Modern Low Rise Flats



Balcony

Traditional granite housing

Security grid on balcony

# Planned Open Space in Hilton



Stewart Park is a council maintained area of open space in the Hilton area. It has space for many recreational activities including football and a children's play park.



Hilton Woods provides woodland walks linking areas of housing in the Hilton area. It is open woodland and well provided with maintained footpaths.



Modern building materials



Private parking area

Well tended areas of open space

## Villa-style Terraced and Semi Detached Houses



Replacement windows

Granite walls

Well tended gardens



On street parking

## Small Row of Low Order Shops and Services in Hilton

Houses within walking distance

Linear development of low order shops and services

Open space



Newer flats

On street parking

Wide pavement for pedestrians and buggies

## Environmental Quality in Hilton



- On Rosehill Crescent there were many trees with most gardens full of plants and flowers. There was evidence of more trees being planted along the edge of the pavements.
- There was no derelict land to be seen, although there was a small amount of vandalism.
- The street was quiet and there were few cars passing to raise the noise level
- There were no offensive smells
- The houses appeared to be in good condition as there was no deterioration of the walls, peeling paint, loose slates, broken gutters or broken glass in windows
- There was on street parking as there was no room for garages
- Many households had more than 500m to travel to the nearest public open space or services